



**Diabetes Association of Sri Lanka
National Diabetes Centre**

50, Sarana Mawatha, Rajagiriya, Sri Lanka.
Telephone: +94 112883318/2872951 Fax: +94 11 2872952
E-mail: dasl@sltnet.lk Web: www.diabetessrilanka.org

SINGLE VISIT SCREENING PACKAGES

STANDARD PACKAGE

Consist of

Cost: Rs. 3,500

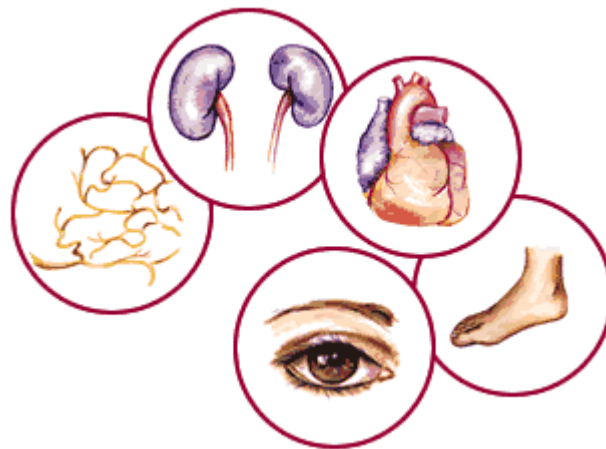
- FBS
- Lipid Profile
- HbA1c
- Serum creatinine
- ECG
- Urine Albumin/Sugar
- Microalbumin
- Eye check including fundal photography
- Neuropathy Assessment
- Full physical assessment
- Doctor's Consultation

EXECUTIVE PACKAGE

Consist of

Cost: Rs. 5,000

- FBS
- Lipid Profile
- HbA1c
- Liver enzymes (SGOT;SGPT;ALP;GGT)
- Renal Profile
- ECG
- Eye check including fundal photography
- Neuropathy Assessment
- Full physical assessment
- Doctor's Consultation



COMPLICATIONS OF DIABETES



unite for diabetes